

HDMI Digital Camera with Auto-Focus & Measurement Software

H10 Series

Characteristics

A multiple interface (HDMI + WiFi + SD Card) CMOS camera with built-in auto-focus functions that adopts ultra-high performance Sony CMOS sensor as the image-picking device. The built-in measurement software inside gives user ultimate fast and easy inspection/measurement process.

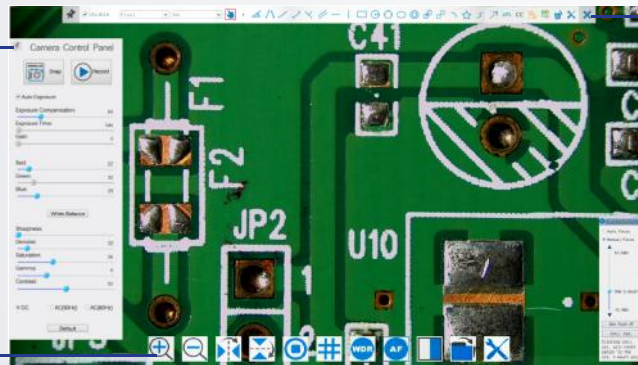


Camera Control Panel

- Capture Image
- Record Video
- Adjust Image Setting
- White Balance Setting

Menu Toolbar

- Zoom In/Out
- Flip/Rotate Image
- Freeze Live Image
- Indicator Line
- Wide Dynamic Range Setting
- Browse Save Image/Video
- Microscope Setting



Measurement Toolbar

- Angle
- Line
- Parallel Line
- Horizontal/Vertical Line
- Rectangle
- Circle
- Calibration Setting

Auto-focus Control Panel

- Conducting Auto-Focus operation
- Adjusting Manual Focus
- Adjusting Conjugate Calibration

Specifications

Model	H10.001
Sensor & Size (mm)	1080P/2M/ Sony IMX185 1/1.9" (7.20 x 4.05)
	3.75 x 3.75
G Sensitivity Dark Signal	1120mv with 1/30s ; 0.15mv with 1/30s
FPS/Resolution	60@1920 x 1280 (HDMI) ; 25@1920 x 1080 (WiFi)
Binning	1 x 1
Exposure Time	0.06ms - 918ms
Picture Format	JPEG with 2MP Resolution in SD Card
Video Record	ASF Format 1080P 30fps in SD Card
Auto-Focus Control Panel	Including Auto-Focus, Manual Focus, One-push AF and Conjugate Correction Functions
Camera Connection	HDMI
Dimension	78 (W) x 70 (L) 92 (H) mm
Weight	0.47kg
Power Supply	DC 12V/2A Adaptor

Features

- All-in-1 (HDMI + WiFi + SD Card) C-mount camera with built-in Auto-Focus sensor for faster inspection
- Built-in mouse control
- Built-in image capture & video record
- Built-in toolbar including zoom, mirror, comparison, freeze, cross, browser
- Built-in image & video browsing
- Ultra-Fine color engine with perfect color reproduction capability
- CNC shell molding design

